

Original Research Paper

# Comparative Analysis of the Efficacy of Landslide Susceptibility Models

Jordan Henrique de Souza, Gislaine dos Santos, Gabriela Guimarães Gouvêa de Oliveira, Raphaella de Souza Resende Moreira and Clarice Simões Monnerat

School of Civil Engineering, UFJF Federal University of Juiz de Fora, Juiz de Fora (MG), Brazil

## Article history

Received: 01-01-2019

Revised: 27-03-2019

Accepted: 31-05-2019

Corresponding Author:

Gabriela Guimarães Gouvêa de Oliveira

School of Civil Engineering, UFJF  
Federal University of Juiz de Fora,  
Juiz de Fora, Brazil

Email: gabriela.oliveira@engenharia.ufjf.br

**Abstract:** This research aims to analyze the efficacy of SHALSTAB, IPT, SAGA, SMORPH and modified SMORPH models in evaluating landslide susceptibility. Statistical analysis concerning both the efficacy of the models in the prediction of landslide risks and the concordance between the models according to landslide occurrence or non-occurrence was performed. For this work, logistic regression, Receiver Operating Characteristic (ROC) curves, Kappa statistic and concordance analysis were used considering a sample of 15,544 incidents reported during the period of 1996 to 2012 in the city of Juiz de Fora, Brazil. The analysis included 855 confirmed landslide occurrences and 14,689 unconfirmed occurrences. The need for the addition of new variables other than those included in the susceptibility analysis models was observed by the analysis of the historical ballast of occurrence. In many cases where SHALSTAB, IPT, SAGA, SMORPH and modified SMORPH models pointed to a low possibility of a landslide, many landslides of great significance occurred, which included casualties. The importance of this study is to assess the efficacy of these models through the indication of new complementary variables. The results show that an anthropogenic variable is necessary as slopes with similar geotechnical characteristics are submitted to different demands compared to natural conditions.

**Keywords:** Landslide, Susceptibility Maps, Predictive Models, Efficacy

## Introduction

In the last decades, urbanization has increased all over the world, mainly in developing countries. Nowadays half of the planet's population lives in urban areas. Cities have become the main expression of the environmental modification made by human beings and they represent the troubled relationship between man and nature.

In Brazil, this process is not different, especially after the intense urbanization that occurred in the post-World War II period. Most Brazilian cities expanded without adequate urban planning, resulting in the emergence and/or worsening of several environmental and social problems. However, environmental problems do not affect the entire urban space homogeneously in terms of distribution and intensity and are often related, in the Brazilian case, to the most undervalued areas whose physical spaces are

occupied by underprivileged social classes. Socioeconomic and human losses are expected to increase because climate change will probably result in a higher frequency of landslides caused by rainfall increase and by social pressure, which drives people towards sloped areas (World Bank, 2010).

The expansion of urbanized areas, characterized by the waterproofing of large occupied surfaces, directly affects the capacity of water infiltration into the soil, increasing superficial drainage and therefore changing the entire operation of the hydrological cycle in cities, with important consequences for the population residing there. Episodes of intense rainfall, characteristics of tropical regions, add to the intensification of the disordered occupation of sloped areas, the removal of vegetation cover, the misuse, mishandling and poor conservation of soil and contribute significantly to increase urban environmental problems related to mass movements.

Landslide susceptibility models are powerful tools for providing better knowledge of the dynamics of mass movements in urban areas located in tropical regions. These models may significantly help in identifying areas most prone to the occurrence of this phenomenon by using different techniques, such as the logistic regression applied in this study. The results from these models may also contribute to the better organization of the urban space.

Logistic regression is known to be one of the most suitable methods for evaluating landslide susceptibility (Hosmer *et al.*, 2013). Several comparative studies demonstrate the superior performance of this technique as compared to others (Guzzetti *et al.*, 2005; Mathew *et al.*, 2009; Rossi *et al.*, 2010; Vorpahl *et al.*, 2012; Akgün, 2012; Felicísimo *et al.*, 2013).

The use of this multivariate technique to model landslide susceptibility is mainly due to its capacity to operate with any kind of independent variable (ratio, interval and ordinal or nominal scale), regardless of the deviation of predictors considered and of the residuals of a normal distribution. All discrete independent variables are binarized and transformed into dichotomous or polychotomous variables. The dependent variable is defined as a binary variable in terms of a stable or an unstable state of the mapping unit to be classified (Costanzo *et al.*, 2014).

The application of these techniques requires a series of comprehensive multi-temporal data that is not always available. The limitations of the databases described in literature refer to the integrality of the historical series, the exact location of time and space effects, the uncertainty about the number of people involved and the reliability of the sources (Petrucci and Pasqua, 2008; Petrucci and Pasqua, 2009; Jaiswal *et al.*, 2010; Petrucci and Pasqua, 2012). The best way to verify the validity of a model is by using it in areas that are different from the ones it was designed for (Jaiswal *et al.*, 2010).

Different quantitative methods were applied all over the world in the last decades to evaluate landslide susceptibility, many of them based on statistical methods (Yin and Yan, 1988; Carrara *et al.*, 1991; Soeters and Westen, 1996; Aleotti and Chowdhury, 1999; Guzzetti *et al.*, 1999; Süzen and Doyuran, 2004). Approaches exclusively based on physical models are less frequent and the models published include the dSLAM (Wu and Sidle, 1997), as well as the SHALSTAB model (Dietrich and Montgomery, 1988; Montgomery and Dietrich, 1994; Calcaterra *et al.*, 2004; Pack *et al.*, 2005), SINMAP and the model TRIGRS (Iverson, 2000; Baum *et al.*, 2008). These models are widely used, with special emphasis in the US, Brazil, China and Italy (Dietrich *et al.*, 1998; Montgomery *et al.*, 1998; Fernandes *et al.*, 2001; Ramos *et al.*, 2002; Guimarães *et al.*, 2003;

Savage *et al.*, 2004; Salciarini *et al.*, 2006; Santini *et al.*, 2009; Cervi *et al.*, 2010; Vieira *et al.*, 2010).

One of the reasons why risk assessment and mapping still involve challenges is the lack of time data on landslide occurrence (Pellicani *et al.*, 2014). In other countries, such as Portugal, the works of (Bateira, 2001; Teixeira, 2005; Pereira, 2009; Pereira *et al.*, 2012) indicate that landslide susceptibility models based exclusively on physical variables were still not applied and they report models based on mountain geomorphology and mechanical and hydrological information available on the surrounding massifs.

Several existing studies point to the need to understand the assessments of landslide susceptibility and the relevance of models that produce effective results. In this sense, this research proposes to measure and compare the efficacy of the SHALSTAB, IPT, SAGA, SMORPH and modified SMORPH models to the real occurrence data, thus verifying the degree of efficacy between the landslide implied by the models and the actual risk. This way, whether the variables of these models respond properly to the landslide phenomenon may be also checked. Based on the results, it will be possible to identify the existence of false positives indicated by the models and if there is a historical dependency between the data of landslide occurrence or non-occurrence.

## Materials and Methods

Our approach involved three steps: characterization of geoenvironmental context, data organization and application of landslide susceptibility models and comparative analysis of the efficacy of landslide susceptibility models (Fig. 1).

### Study Area

The city of Juiz de Fora is located in the state of Minas Gerais, Brazil, where strong urban expansion over the past decades and the expressive population growth led to the occupation of steeply sloped areas, as well as to the consequent increase of mass movements. The city's population, which was of 169,440 inhabitants in 1960, reached a total of 516,247 inhabitants in 2010 and the urbanization rate, which was of 74.46% in 1960, reached 98.86% in 2010 (IBGE, 2010).

The study area corresponds to the eastern region of Juiz de Fora City, traditionally characterized by the occurrence of a large number of landslide events. Figure 2 presents this region, which is one of the most affected areas by the problem of mass movements in recent years. The Civil Defense reported in this area a total of 855 mass movement events during the period of 1996 to 2012, frequently followed by human and

material losses. Thus, the uneven topography, the presence of steep slopes, the high amount of summer rainfall, the sparse vegetation cover and the intense and disordered occupation of these areas by underprivileged social classes

all constitute a framework that requires improved knowledge of these dynamics, in order to develop a series of measures of urban space management and planning that may mitigate the consequences of mass movements.

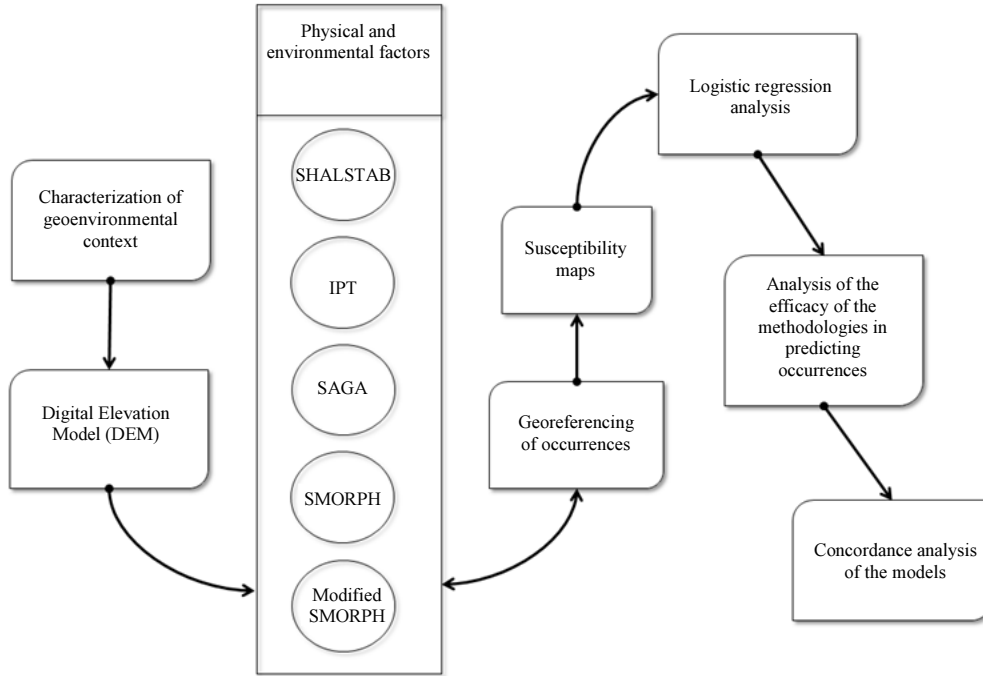


Fig. 1: The research flowchart



(a)



(b)

**Fig. 2:** (a) Front view of “Três Moinhos” neighborhood slope showing signs of landslide; (b) Side view of buildings on slope showing signs of landslide

The eastern area of Juiz de Fora is composed of 15.62 km<sup>2</sup> of urban area and 10.24 km<sup>2</sup> of rural area. It is a significantly large area, between 694.9 m and 1,043.4 m. Most slopes gather on plane areas with high slopes up to 35°C. However, there is a significant area with slopes greater than 45°C.

About 60% of the slopes are less than 10 m high and only 20% in the eastern area are higher than 20 m. This represents a high potential for landslides.

#### *Data Organization and Application of Landslide Susceptibility Models*

Between 1996 and 2012, 855 georeferenced landslide occurrences were identified in the eastern region of Juiz de Fora. All registered cases were properly assessed and reported by an expert civil engineer in the geotechnical area.

From aerial photogrammetric surveys and laser profiling, both executed in 2007, it was possible to perform the digital terrain modeling with 1 m pixel resolution throughout the study area.

The municipal government already had a landslide susceptibility map, created using the SAGA/UFRJ model (Silva, 1990), in which four risk categories were described (low, medium, high and very high). Such categories were defined according to the IPT model (Carvalho *et al.*, 2007).

Through digital modeling of the terrain and physical data from the location, landslide susceptibility maps were developed using SHALSTAB (Dietrich and Montgomery, 1988), IPT (Carvalho *et al.*, 2007), SAGA/UFRJ (LAGEOP/UFRJ, 2007), SMORPH and modified SMORPH (Shaw and Johnson, 1995) models.

From the SHALlow STABILITY Model, the model SHALSTAB merges the hydrological model to infinite slope stability. Dietrich and Montgomery (1988) first developed this model at the beginning of the 1990's at the University of California at Berkeley.

The SHALSTAB model is presented in Equation 1 (Silva *et al.*, 2013) defining for each pixel the landslide susceptibility:

$$\log \frac{Q}{T} = \frac{\sin \theta}{a/b} \cdot \left[ \frac{c'}{\rho_w \cdot g \cdot z \cdot \cos^2 \theta \cdot \tan(\phi')} + \frac{\rho_s}{\rho_w} \cdot \left( 1 - \frac{\tan \theta}{\tan \phi'} \right) \right] \quad (1)$$

Where:

- $Q$  = Rainfall [mm]
- $T$  = Soil transmissivity [m<sup>2</sup>·day<sup>-1</sup>]
- $\theta$  = Slope [°]
- $a$  = Contribution area [m<sup>2</sup>]
- $b$  = Is the contour length across which the flow is accounted for [m]
- $c'$  = Soil effective cohesion [kPa]
- $\rho_s$  = Density of the soil [kg·m<sup>-3</sup>]
- $\rho_w$  = Density of the water [kg·m<sup>-3</sup>]



$g$  = Gravitational acceleration [ $m \cdot s^{-2}$ ]

$z$  = Soil thickness [ $m$ ]

$\phi'$  = Soil effective friction angle [ $^\circ$ ]

The Instituto de Pesquisas Tecnológicas (IPT) model considers the forecast for landslides based on slope, slope curvature and soil state (soil-free, talus fragments and soil fractions altered areas).

The SAGA/UFRJ is a Geographic Information System (GIS) for environmental applications to analyze conventional georeferenced data supplementing reports and maps to support decision making actions.

The SMORPH model, which stands for Slope MORPHology (Shaw and Johnson, 1995), developed in the United States for forecasting superficial landslides, is an empirical model adapted to include the contributing area with the creeping process. This model only uses parameters derived from a Digital Elevation Model (DEM) to calculate susceptibility.

SMORPH requires slope and curvature thresholds as inputs to define the surfaces with regard to landslide potential. Slope thresholds needed to be calculated for five slope ranges: Relatively flat, low steepness, moderate steepness, high steepness and extremely high steepness.

Slopes with convex curvature tend to dispel the surface water, thereby not allowing an aquifer to form and making the development of pore water pressure under the soil difficult, which contributes to the instability of the slopes. Figure 3 presents the curvature types: slopes with flat, convex and concave shape make it easy for water to concentrate due to the surface and undersurface water accumulation.

The modified SMORPH model, SMORPHM, proposes an evaluation of susceptibility for landslides by considering the possibility of Talus soil (a slope formed especially by an accumulation of rock debris at the base of a cliff).

The environmental module has three basic geographical functions:

- Signature: Is used to define the hypsometrical characteristics for specific areas selected by the user that allows the identification of important variables
- Modification control: Is the continuous inspection of environmental phenomena through sequential time mapping
- Evaluation: Is the superposition of maps used to combine weight and scale valuation for developing the potential risk factors in a new map

Many data combinations may be developed this way and the maximum value of digital map distribution for environmental change may be produced and analyzed. This maximal contribution

automatically allows the evaluation of all other class of map for maximum value. The algorithm of this evaluation is presented in Equation 2 (Silva *et al.*, 2013).

The distribution of occurrences was classified in a binary way as confirmed landslide occurrences and non-occurrences (when no landslides were identified). Out of a total of 15,544 incidents reported in the system by population request between 1996 and 2012, only 855 were confirmed occurrences and 14,689 represented non-occurrences (i.e., occurrences that were reported but not confirmed when the Civil Defense staff visited the site).

The word repetition refers to repeated landslides in the same area. Based on the Civil Defense's database, the confirmation concerning occurrences and non-occurrences regarding the reported events was verified by means of an engineer's report, which is generated after the location is surveyed. The engineer's reports are essential to confirm occurrences. After analyzing the georeferenced reports, we could identify the distribution of confirmed landslide surveys, named "occurrences", as well as the surveys that pointed to the:

$$A_{ij} = \sum_{k=1}^n (P_k \times N_k) \quad (2)$$

Where:

$A_{ij}$  = Georeferenced base pixel

$n$  = Number of maps

$P_k$  = Weight of each map "k", divided by 100

$N_k$  = Scale valuation for each map class

### *Comparative Analysis of the Efficacy of Landslide Susceptibility Models*

Using a Geographic Information System (QGIS® version 2.18) crosschecks were performed with the susceptibility models, from records on landslide and non-landslide areas.

Data regarding confirmed landslide occurrences in the eastern region of Juiz de Fora were annually grouped and are presented in Table 1, followed by the number of occurrences per year in the period of 1996 to 2012.

An analysis of the data enabled us to identify a distribution of repeated occurrences in the same location, but the data presented in Table 2 did not indicate interference in the aims of this research on models for predicting landslide occurrences.

So-called "non-occurrences" (i.e., cases in which the landslide occurrence was not confirmed).

Repetition of landslide occurrences was identified in the same geographic location during the analysis of the database; however, such repetition was not considered statistically significant in regards to the focus of this study.

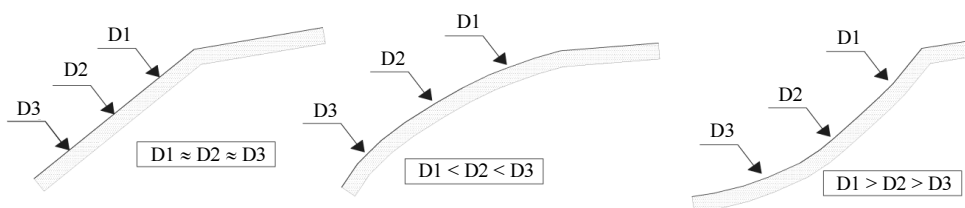


Fig. 3: Slopes D1, D2, D3 showing the process of water and debris dispel and accumulation (Carvalho *et al.*, 2007)

Table 1: Total number of occurrences from 1996 to 2012

Year	1996	1997	1998	1999	2000	2001	2002	2003	2004	2005	2006	2007	2008	2009	2010	2011	2012
Number of occurrences	36	99	17	20	11	22	35	39	40	8	7	130	183	228	162	83	42

Table 2: Distribution of repetition of occurrences

Repetitions	1	2	3	4	5	6	7	8	Total
Occurrences	657	131	45	9	7	4	0	2	855

Logistic regression models (Kleinbaun and Klein, 2010) were developed to estimate the landslide risk according to diagnoses performed by the SHALSTAB, IPT, SAGA, SMORPH and modified SMORPH models.

The statistical analysis consisted of two main steps: (i) Analyzing the efficacy of models for predicting the risk of slope failure; and (ii) analyzing the concordance between the models according to landslide occurrence or non-occurrence.

In order to complement the analysis, Receiver Operating Characteristic (ROC) curves were built. These provide a graphical method of evaluation, organization and selection of diagnostic and/or prediction systems. A concordance analysis between the models was performed via Kappa statistic by considering all pair combinations of models.

The ROC curves were obtained for the final model of landslide prediction by a binary classification, that is, two classes designated as positive and negative. The analyzed ROC curves results were relevant in the process of comparing the predictive efficacy of each model used in this study.

The independence between observations in all analyses was considered; however, spatial statistical models can be adopted to incorporate georeferenced information, thus modeling the possible dependence between occurrences.

## Results and Discussion

### Analysis of the Efficacy of the Models in Predicting Occurrences

The analysis of the efficacy of the SHALSTAB, IPT, SAGA, SMORPH and modified SMORPH models was developed individually at first. It was based on diagnoses of data from each model concerning landslide

occurrences and non-occurrences, generating positive and negative results for efficacy of the occurrence data (Kleinbaun and Klein, 2010).

Figure 4 to 8 presents the application results of the susceptibility model for soil landslides for the eastern region of Juiz de Fora according to the five different models utilized. For the development of the cartographic base, the geodesic reference was SIRGAS 2000, the Geocentric Reference System of the Americas 2000. And the coordinate system used was the Universal Transverse Mercator (UTM).

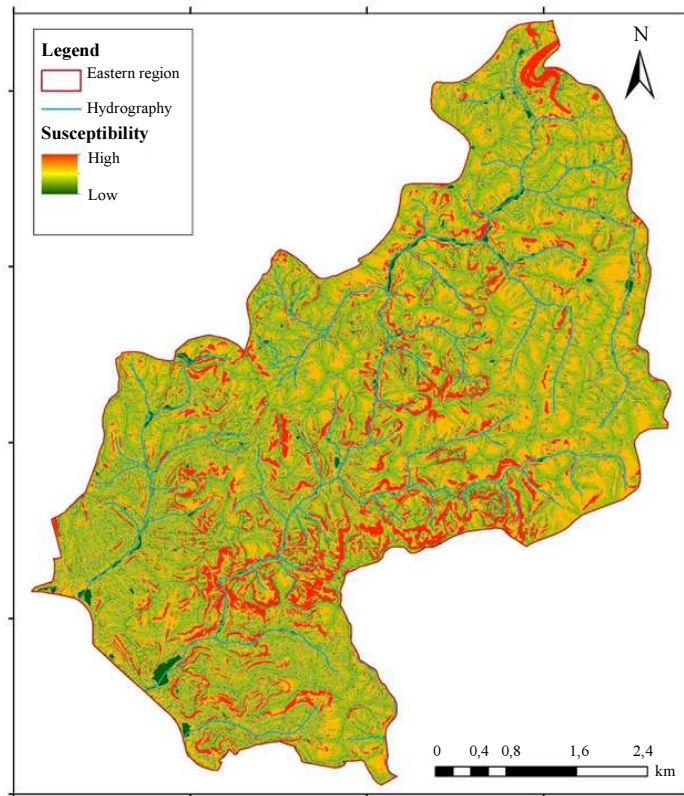
From a color scale ranging from green to red there is, respectively, the indication of low to high susceptibility to the occurrence of landslides. The blue lines identify the water courses present in this region.

It may be observed that in Fig. 6 the upstream part of the river basin is not filled with the landslide susceptibility distribution. It occurred because the necessary information for the operation of the SAGA/UFRJ model, such as soil geomorphology, was not available for the specific area.

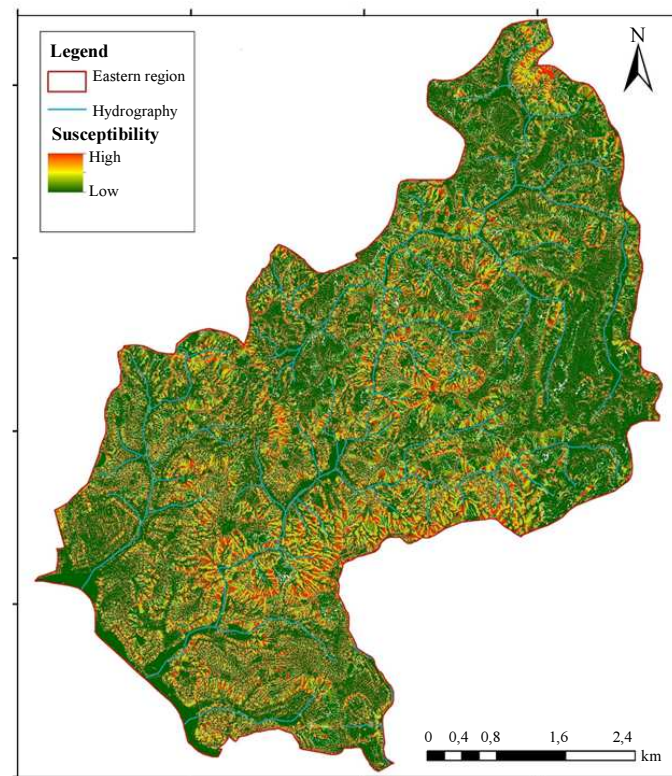
Table 3 resumes an analysis of SHALSTAB, IPT, SAGA, SMORPH and modified SMORPH models for their predictive efficacy of risk occurrence. The positive sign indicates the prediction of an occurrence. And the negative sign represents a diagnosis in which the model did not anticipate the occurrence.

From the columns of the table, "prevalence" means the hit ratio of the cases in which the respective model classified them as positive and negative. The "odds" is defined as the risk of landslide occurrence, which is obtained through the ratio between the probability of occurrence and non-occurrence.

The "odds ratio" value represents the odds ratio or relative risk, i.e., the possibility of an occurrence to take place when the model indicates the positive sign in detriment of when it indicates non-occurrence.



**Fig. 4:** Susceptibility SHALSTAB Map



**Fig. 5:** Susceptibility IPT Map

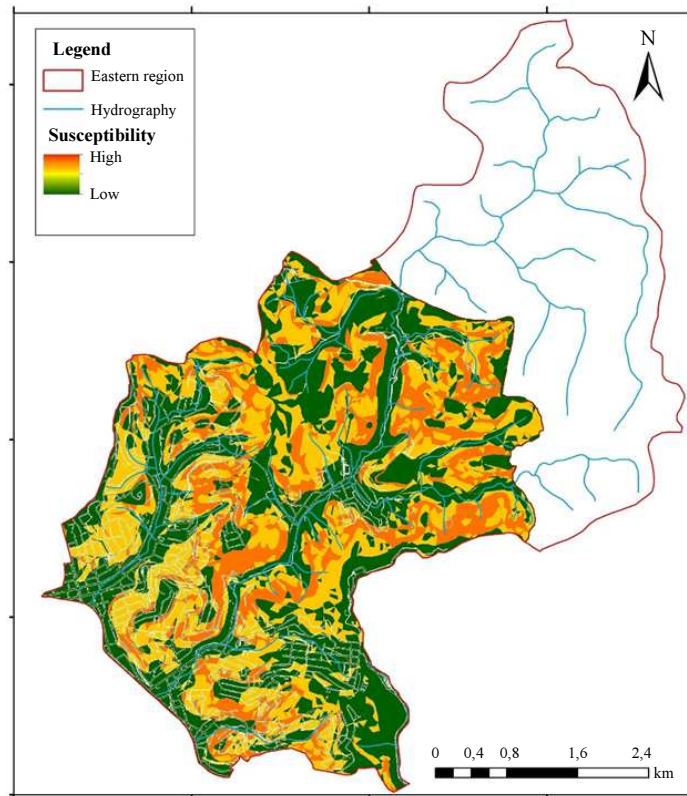


Fig. 6: Susceptibility SAGA-UFRJ Map

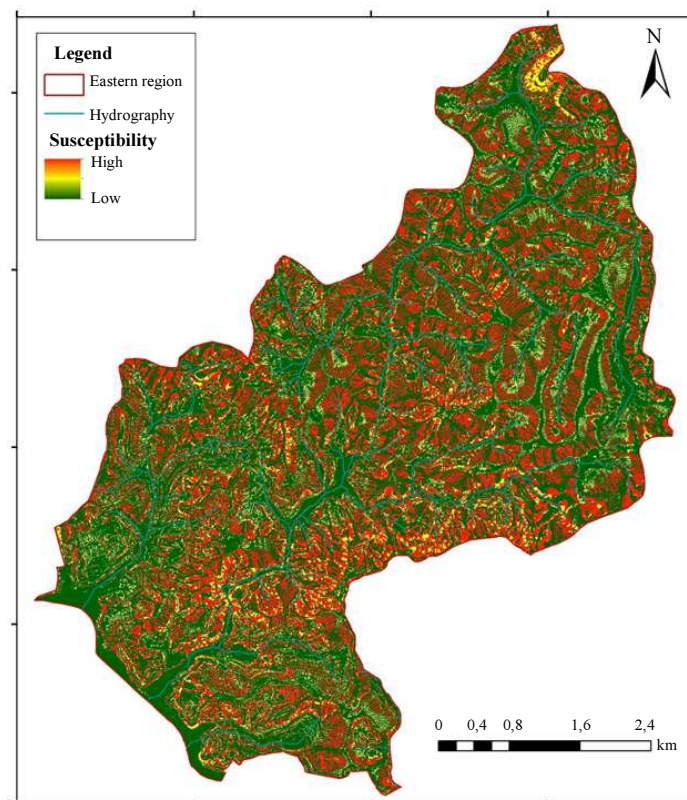
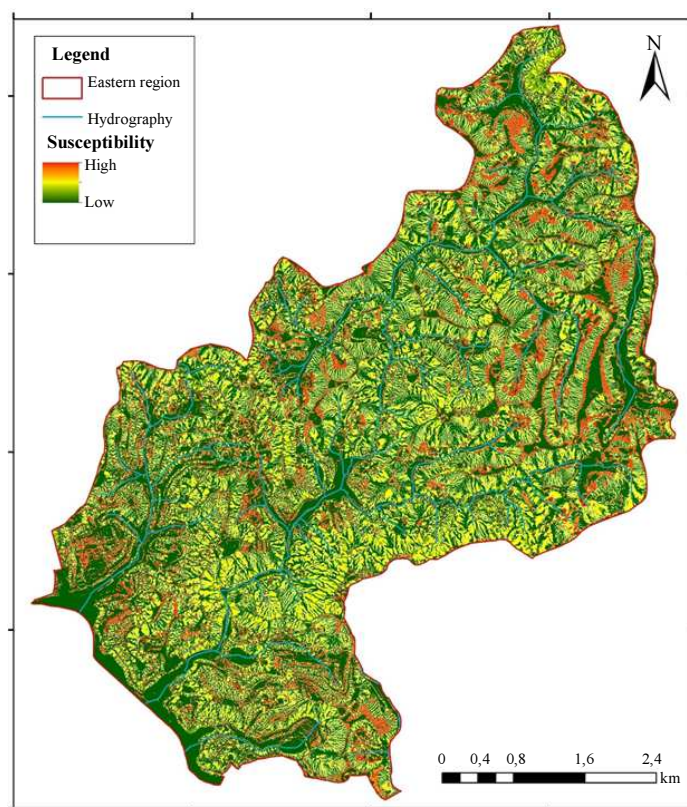


Fig. 7: Susceptibility SMORPH Map





**Fig. 8:** Susceptibility SMORPH Modified Map

**Table 3:** Predictive efficacy of the susceptibility models

Models	Diagnosis	Occurrence	Non-occurrence	Efficacy Ratio	Total	Prevalence*	Odds**	Odds Ratio
SHALSTAB	+	717.00	10,874	15.200	11,591	6.1900	0.0659	1.82 (1.51:2.2)
	-	138.00	3,815	27.600	3,953	3.4900	0.0362	
IPT	+	823.00	13,103	15.900	13,926	5.9100	0.0628	3.11 (2.18:4.60)
	-	32.000	1,586	49.600	1,618	1.9800	0.0202	
SAGA	+	524.00	7,700	14.700	8,224	6.3700	0.0681	1.44 (1.24:1.66)
	-	331.00	6,989	21.100	7,320	4.5200	0.0474	
SMORPH	+	723.00	8,854	12.200	9,577	7.5500	0.0817	3.61 (2.99:4.36)
	-	132.00	5,835	44.200	5,967	2.2100	0.0226	
Mod. SMORPH	+	686.00	10,686	15.600	11,372	6.0300	0.0642	1.52 (1.28:1.81)
	-	169.00	4,003	23.700	4,172	4.0500	0.0422	
Total (for each model)	855	14,689	-	15,544	5,5000	0.0582	-	

\* Occurrences per 100 diagnoses

\*\*Risk occurrence (probability of occurrence related to non-occurrence)

The “efficacy ratio” was calculated through the ratio between the non-occurrence and occurrence cases, considering both signs indicated by the models, positive and negative sign. It represents the ratio in which landslide is more likely to occur than not to occur, or vice versa. Proportionally, the model better predicts the risk when the diagnosis refers to an occurrence compared to a non-occurrence diagnosis.

Furthermore, in order to provide a more complete understanding of the efficacy of each model in predicting landslide occurrences, it was created a diagram that correlates sensitivity and specificity. The “sensitivity” corresponds to true positive, that is, the

probability to predict the event. And the “specificity” corresponds to false positive.

The summary of the analysis of SHALSTAB, IPT, SAGA, SMORPH and modified SMORPH models is presented in Fig. 9 to 13 as a ROC curve.

The Area Under the ROC Curve (AUC) corresponds to the predictive power of the analysis and this value is always between 0 and 1. Thus, the larger the AUC, the higher the predictive power of the model related to the event occurrence.

#### *Analysis of SHALSTAB Model*

For the SHALSTAB model, it was verified that from a total of 11,591 cases, only 717 were confirmed

by the model; whereas in 10,874 cases identified as positive, according to the model, the landslide did not occur. Given a negative diagnosis, we have 138 occurrences, that is, even when the model has a non-occurrence as a result, it is still expected that 3.49% of landslides are to happen.

The risk occurrence when the model indicates a positive diagnosis is 6.59%. Likewise, when the model points to a negative diagnosis, the risk of non-occurrence is 3.62%. Both results of occurrence and non-occurrence accuracy are low.

Analyzing the “odds ratio”, it is 1.82 times higher than the chance of occurrence when the model points to non-occurrence. The confidence interval is 1.51: 2.2, it is significant and does not include the 1.0 value.

From the Fig. 9 for SHALSTAB model, the maximum prediction value found is 0.035, which corresponds to the maximum value of the ROC curve.

The area under the curve is 0.549, which is considered a low value (admitting 1.000 as maximum value). This value will be evaluated later in comparison with other models analyzed in this research.

#### Analysis of IPT Model

It was verified that only 823 of 13,296 cases were identified by the model, while in 13,103 cases, the landslide indicated as positive by the model did not occur. Of events given a negative diagnosis by the IPT model, there were 32 occurrences, that is, even when the model identifies a non-occurrence, 1.98% of landslides are still expected to occur.

The risk occurrence when the IPT model performs a positive diagnosis corresponds to 6.28%. Likewise,

there is a risk of 2.02% in the case of a negative diagnosis. As in the SHALSTAB model, the IPT showed low results (odds) of occurrence and non-occurrence efficacy.

The possibility of occurrence, when the model classifies it as positive, is 3.11 times higher than the chance for it to occur when the IPT points to a non-occurrence. The confidence interval is 2.18:4.60, which is significant and does not include the 1.0 value.

A summary of the analysis is shown in Fig. 10. The maximum value of prediction corresponds to 0.020.

The area under the ROC curve corresponds to the predictive power of the analysis, whose value is 0.535, which is considered low and will also be evaluated later in comparison with the other models analyzed in this research.

#### Analysis of SAGA Model

It was verified that only 524 from a total of 8,224 cases were confirmed by the model, while in 7,700 cases the landslide indicated as positive by SAGA did not occur. Given a negative diagnosis by the model, we have 331 occurrences, that is, even when the model results in a non-occurrence, 4.52% of landslides are still expected to occur.

The risk occurrence corresponds to 6.81% when the model provides a positive diagnosis. Likewise, when the model provides a negative diagnosis, the risk is 4.74%.

In this case, when the model classifies an occurrence as positive, we have a result 14.7 times more likely not to occur than to occur. When the model classifies an occurrence as negative, we have a result 21.1 times more likely not to occur than to occur.

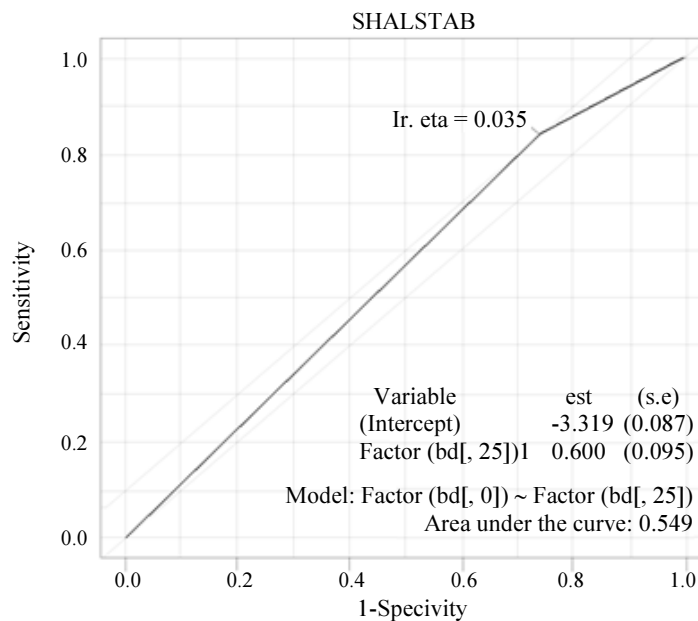
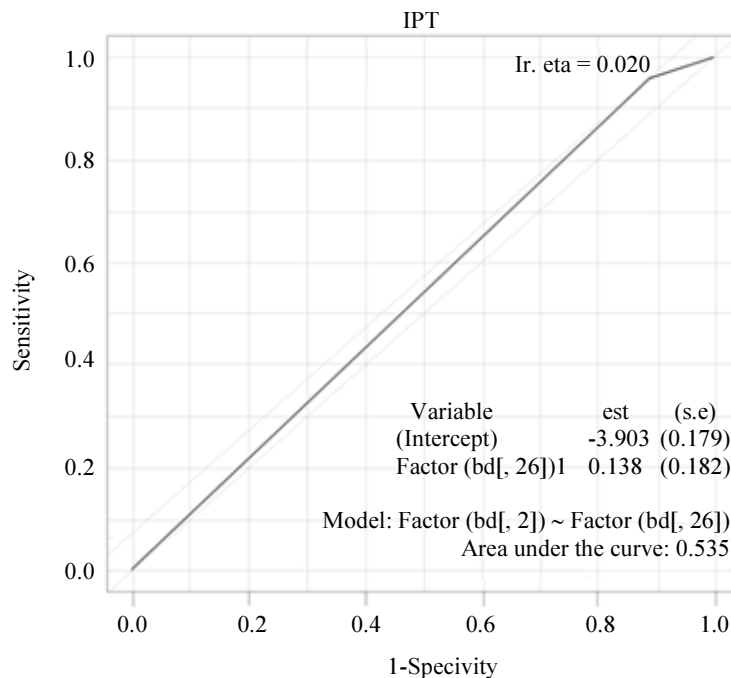


Fig. 9: ROC curve considering the predictive efficacy of the SHALSTAB model



**Fig. 10:** ROC curve considering the predictive efficacy of IPT model

A summary of the analysis is shown in Fig. 11, in which the maximum prediction value found corresponds to 0.045 and to the maximum value of the ROC curve. The area under the ROC curve corresponds to 0.544, which is considered low.

#### Analysis of SMORPH Model

It was verified that only 723 from a total of 9,577 cases were confirmed as positive by the model, while the 8,854 landslides indicated as positive did not occur. Given a negative diagnosis by the SMORPH model, we have 132 cases of occurrence, that is, even when the model results in a non-occurrence, 2.21% of landslides are still expected to occur.

Thus, “prevalence” means the hit ratio of occurrences related to the cases classified by the SMORPH model as positive (7.55%) and negative (2.21%). The risk occurrence corresponds to 8.17% when the model provides a positive diagnosis. Likewise, when the model provides a negative diagnosis, the risk is 2.26%.

As in the SHALSTAB, IPT and SAGA models, the results of the accuracy of occurrence of the SMORPH model were low.

From the Fig. 12, the maximum prediction value found corresponds to 0.022 and the AUC corresponds to 0.621, which is considered low value. Yet, it is the highest value of all models presented.

#### Analysis of Modified SMORPH Model

It was verified that, from a total of 11,372 cases, only 686 were confirmed by the model; while 10,686 landslide cases classified as positive by the model did not take place. Given a negative diagnosis by the modified SMORPH model, we have 169 cases of occurrences, that is, even when the model results in a non-occurrence, 4.05% of them are still expected to occur.

The odds correspond to 6.42% when the model provides a positive diagnosis. Similarly, the risk occurrence is 4.22% when the model provides a negative diagnosis.

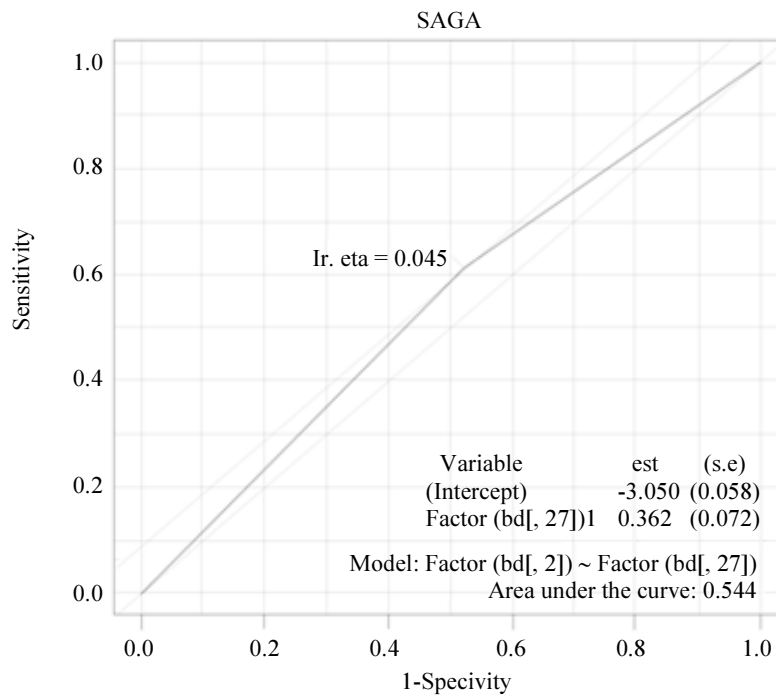
When the result of the model for an occurrence is positive, the result is 15.5 times more likely not to occur than to occur. When it points to the negative of a landslide occurrence, the result is 23.6 times more likely not to occur than to occur.

For the modified SMORPH model, the area under the curve (Fig. 13) is 0.537 and its maximum value corresponds to 0.041.

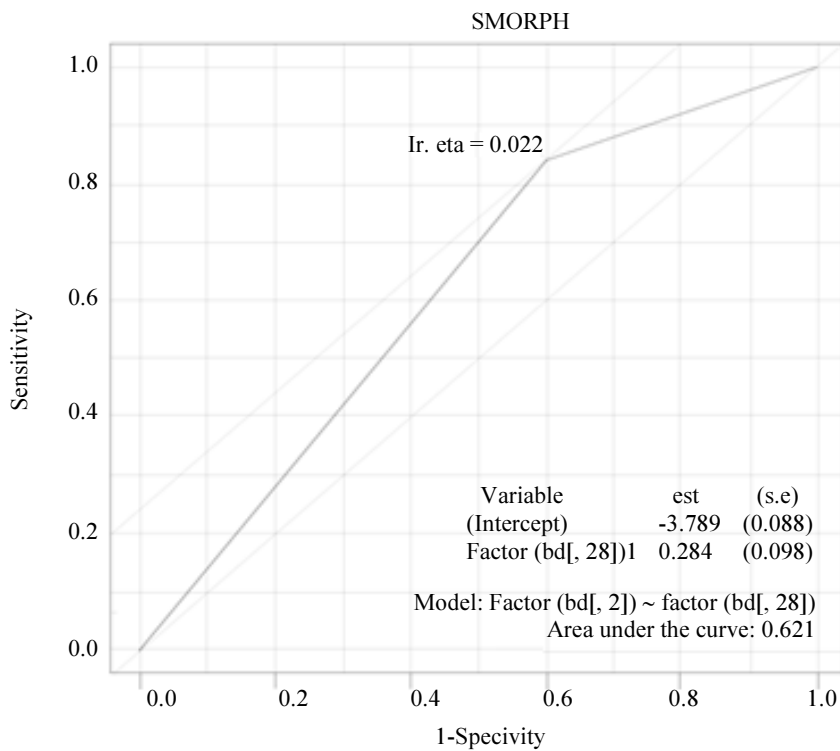
In order to streamline the comparison process between the results of odds ratios, Table 4 summarizes the analysis of the variation of risk occurrence, while Table 5 summarizes the analyzed predictions of the occurrences. According to the results, the models are presented in descending order in relation to their capacity to meet the requirement (that is, to point to the risk occurrence or to predict the occurrences).

The SMORPH model presents a higher predictive performance than the other models; however, this model could still be improved if it considered other

variables, for instance, the use of soil. When the SMORPH model is compared to the others, it is observed that it fails less and succeeds more.

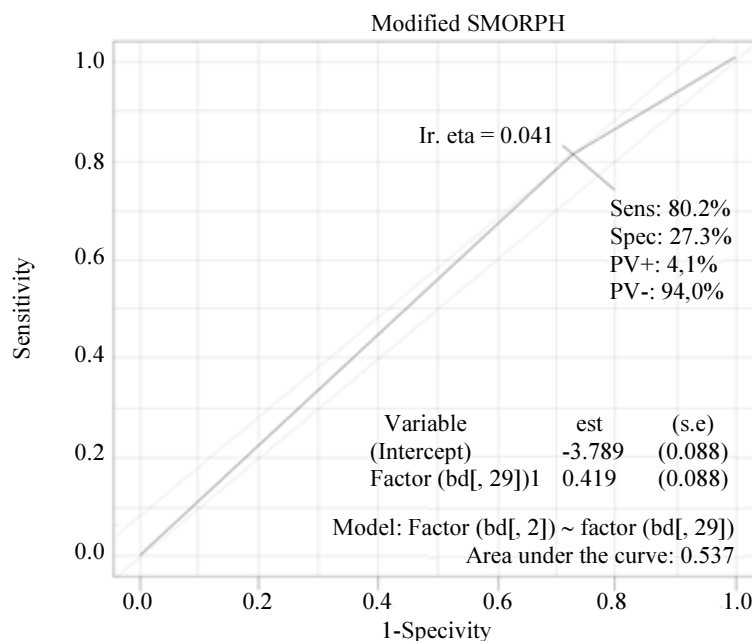


**Fig. 11:** ROC curve considering the predictive efficacy of SAGA model



**Fig. 12:** ROC curve considering the predictive efficacy of SMORPH model





**Fig. 13:** ROC curve by considering the predictive efficacy of modified SMORPH model

**Table 4:** Ranking of variation of risk occurrence

Models	Odds	Odds	Odds Ratio	Ranking of capacity to indicate risk occurrence
SMORPH	0.0817	0.0226	3.61	1 <sup>st</sup>
IPT	0.0628	0.0202	3.11	2 <sup>nd</sup>
SHALSTAB	0.0659	0.0362	1.82	3 <sup>rd</sup>
SMORPH-Modified	0.0642	0.0422	1.52	4 <sup>th</sup>
SAGA	0.0681	0.0474	1.44	5 <sup>th</sup>

**Table 5:** Ranking of the accuracy of the occurrence with the models

Models	Area under the curve	Ranking of the accuracy of the model
SMORPH	0.621	1 <sup>st</sup>
SHALSTAB	0.549	2 <sup>nd</sup>
SAGA	0.544	3 <sup>rd</sup>
SMORPH-Modified	0.537	4 <sup>th</sup>
IPT	0.535	5 <sup>th</sup>

*Concordance Analysis of the Models According to the Type of Occurrence*

The following analyses were performed with pairs of models for the concordance evaluation by Kappa statistic, which has p-value as the descriptive significance level of the test. The standard significance levels frequently used have p-value lower than 5%.

From the occurrence and non-occurrence data, when the models predict if there will be an occurrence or not, we intend to identify the concordance between the models when both of them predict the occurrence and the non-occurrence.

Based on the results of concordance analysis by Kappa statistic ( $Z = -0.731$  and  $p\text{-value} = 0.7676$ ) of

SHALSTAB and IPT models, it is possible to conclude that there is no significant evidence of association and the concordance may be considered random or, in other words, casual. The concordance results between SHALSTAB and IPT diagnoses for non-occurrences by Kappa statistic were  $Z = 0.395$  and  $p\text{-value} = 0.3464$ , which indicates a concordance considered random (casual).

The concordance analysis of SHALSTAB and SAGA models for the occurrences may be considered random (casual) by Kappa statistic ( $Z = 0.9102$ ,  $p\text{-value} = 0.1814$ ). However, for the respective models analyzed to non-occurrence, there is a significant concordance between the diagnoses with  $Z = 3.3617$  and  $p\text{-value} = 0.0003873$ .

After that, SHALSTAB and SMORPH models were analyzed and the concordance may be considered random (casual) for the occurrence diagnoses ( $Z = 1.346$ ,  $p\text{-value} = 0.08915$ ) and also for non-occurrence ( $Z = -6.1508$ ,  $p\text{-value} = 1$ ).

The analysis of SHALSTAB and modified SMORPH models indicates a random concordance between the occurrence diagnoses by Kappa statistic ( $Z = -0.9412$ ,  $p\text{-value} = 0.8267$ ), as well as between the non-occurrence diagnoses ( $Z = -4.8248$ ,  $p\text{-value} = 1$ ).

**Table 6:** Concordance analysis of the models

Models	Occurrence		Concordance	Non-occurrence		Concordance
	Z	P-Value		Z	P-Value	
SHALSTAB × IPT	-0.7310	0.767600	Random	0.39500	0.346400	Random
SHALSTAB × SAGA	0.91020	0.181400	Random	3.36170	0.0003873	Significant
SHALSTAB × SMORPH	1.34600	0.089150	Random	-6.15080	1.0000000	Random
SHALSTAB × Modified SMORPH	-0.9412	0.826700	Random	-4.82480	1.0000000	Random
IPT × SAGA	-0.0543	0.5217000	Random	16.13010	2.2e-16	Significant
IPT × SMORPH	1.7900	-0.036730	Significant	-21.9032	2.2e-16	Significant
IPT × SMORPH	3.4121	0.0003223	Significant	35.88570	2.2e-16	Significant
SAGA×SMORPH	4.0022	3.138e-05	Significant	29.66260	2.2e-16	Significant
SAGA × Modified SMORPH	0.7697	0.220700	Random	-21.0080	2.2e-16	Significant
SMORPH × Modified SMORPH	4.6543	1.626e-06	Significant	36.65830	2.2e-16	Significant

The concordance between the diagnoses of IPT and SAGA may be considered random for the occurrences ( $Z = -0.0543$ ,  $p$ -value = 0.5217), which is significant to the data related to non-occurrences ( $Z = 16.1301$ ,  $p$ -value < 0,001).

Considering the analysis of IPT and SMORPH for occurrences and non-occurrences, the concordance results were significant, presenting ( $Z = 1.79$ ,  $p$ -value = 0.03673) and ( $Z = -21.9032$ ,  $p$ -value < 0,001), respectively.

The analysis between IPT and modified SMORPH was considered significant to the concordance of occurrences ( $Z = 3.4121$ ,  $p$ -value < 0,001) and also to non-occurrences ( $Z = 35.8857$ ,  $p$ -value < 0,001).

SAGA and SMORPH models showed significant concordance in the diagnoses between occurrences ( $Z = 4.0022$ ,  $p$ -value < 0,001) and non-occurrences ( $Z = 29.6626$ ,  $p$ -value < 0,001).

The concordance between the diagnoses from SAGA and modified SMORPH may be considered random (casual) for the occurrences ( $Z = 0.7697$ ,  $p$ -value = 0.2207), which is considered significant to the non-occurrences ( $Z = -21.008$ ,  $p$ -value < 0,001).

The analysis between SMORPH and modified SMORPH models indicated a significant concordance between the models for the occurrences ( $Z = 4.6543$ ,  $p$ -value < 0,001) and also for the non-occurrences ( $Z = 36.6583$ ,  $p$ -value < 0,001).

The analyses presented here reflect the concordance between models in the diagnoses according to the type of occurrence. Therefore, it can be observed when two models indicate a positive prediction and what degree of concordance they had in the diagnoses generated.

Table 6 summarizes the analysis results of concordance between the models, according to the type of occurrence.

## Conclusion

Through the presented analysis, especially through ROC curves, this research concludes that the accuracy of

models is relevant; however, it is still low due to a large number of false positives indicated by all models. In all landslide models, anthropogenic variables - such as soil use-are not considered in the analyses. When analyzing those variables “in loco” in these landslide cases, they were verified as one of the most important determining factors contributing to the occurrence of geotechnical instability processes on the slopes. It is important to highlight that civil engineers, who confirmed the information validity, countersigned all 855 landslides cases.

It may be observed that the predictive power of the studied models is only slightly different, ranging from 0.535 to 0.621, which demonstrates the need for new variables to be included in the structure of the models. For the area in question, the SMORPH model provided the most significant result, although barely. Substantial differentiation is not observed between models.

The results indicated various confirmed cases of landslides while the models did not predict the existing risk. Thus, the analyses of the results aiming at identifying the existence of false positives and true negatives indicated high indexes, reflecting conservative models that require revision of model variables.

The research allowed us to verify the inexistence of a geographical recurrence relationship of a given occurrence when analyzed in the context of a historical series.

The event reported in the past does not necessarily imply a new occurrence. The fact that the analyzed place is an area of lower purchasing power points to a lack of retaining and drainage structures in particular areas, which could minimize landslide circumstances.

That being said, this research confirmed that the variables considered in these models do not respond properly to the phenomenon, indicating the need for a more detailed analysis that can associate the anthropogenic dynamics, as well as the social pattern of the area. The physical variables alone are unable to predict the proper efficacy of risk indicators. The presented result support the adoption of the models

studied but with the inclusion of anthropogenic variables, which would increase the efficacy of the models. For this purpose, in-depth studies are recommended on the influence of the relief amplitude, geomorphology, lithology and its structural aspects, as well as soil use.

## Acknowledgment

The authors are grateful for supports from Civil Defense of the Municipality of Juiz de Fora for making the data available. We also would like to thank the UFJF International Relations Office for the linguistic revision of the manuscript.

## Funding Information

This research was developed by the School of Civil Engineering, UFJF Federal University of Juiz de Fora.

## Author's Contributions

**Jordan Henrique de Souza:** Wrote the article as a leading author. Designed the research plan, participated in all programming and calculation, coordinated the data analysis and contributed to the writing of the paper.

**Gislaine dos Santos:** Participated in all experiments and in data analysis also contributing to the writing of the paper.

**Gabriela Guimarães Gouvêa de Oliveira:** Contributed to the writing of the paper, preparation for publication and reviewed the manuscript.

**Raphaella de Souza Resende Moreira and Clarice Simões Monnerat:** Read and reviewed the manuscript.

## Ethics

This article is original and contains unpublished material. The corresponding author confirms that the other authors have read and approved the manuscript and that no ethical issues are involved.

## References

- Akgün, A., 2012. A comparison of landslide susceptibility maps produced by logistic regression, multi-criteria decision and likelihood ratio methods: A case study at İzmir, Turkey. *Landslides*, 9: 93-106. DOI: 10.1007/s10346-011-0283-7
- Aleotti, P. and R. Chowdhury, 1999. Landslides hazard assessment: Summary review and new perspectives. *Bull. Eng. Geol. Environ.*, 58: 21-44. DOI: 10.1007/s100640050066
- Bateira, C., 2001. Hillslope Movements in NW Portugal, geomorphologic susceptibility and geographical information systems. Ph.D. Dissertation in Physical Geography. Faculty of Letters of the University of Porto.

- Baum, R.L., W.Z. Savage and J.W. Godt, 2008. TRIGRS-A Fortran program for transient rainfall infiltration and grid-based regional slope-stability analysis, version 2.0: U.S. Geological Survey Open-File Report.
- Brazilian Institute of Geography and Statistics (IBGE), 2010. Demographic Census – Minas Gerais. Preliminary Results of Demographic Census 2010: Population by Cities.
- Calcaterra, D., R. De Riso and D. Di Martire, 2004. Assessing shallow debris slide hazard in the Agnano Plain (Naples, Italy) using SINMAP a physically based slope stability model. Proceedings of the Symposium on landslides, Rio de Janeiro, (TFG' 04), Taylor and Francis Group, pp: 177-183.
- Carrara, A., M. Cardinali and R. Detti, 1991. GIS techniques and statistical models in evaluating landslide hazard. *Earth Surf Process Landforms*, 16: 427-445. DOI: 10.1002/esp.3290160505
- Carvalho, C.S., E.S. Macedo and A.T. Ogura, 2007. Mapping of risks on slopes and riverbanks. Brasília: Ministry of Cities & Institute for Technological Research. Brasília, Brazil.
- Cervi, F., M. Berti, L. Borgatti, F. Ronchetti and F. Manenti *et al.*, 2010. Comparing predictive capability of statistical and deterministic methods for landslide susceptibility mapping: A case study in the northern Apennines (Reggio Emilia Province, Italy). *Landslides*, 7: 433-444. DOI: 10.1007/s10346-010-0207
- Costanzo, D., J. Chacón and C. Conoscenti, 2014. Forward logistic regression for earth-flow landslide susceptibility assessment in the Platani river basin (southern Sicily, Italy). *Landslides*, 11: 639-653. DOI: 10.1007/s10346-013-0415-3
- Dietrich, W. and D. Montgomery, 1988. SHALSTAB: A digital terrain model for mapping shallow landslide potential. National Council of the Paper Industry for Air and Stream Improvement, Technical Report.
- Dietrich, W., R. Asua and J. Orr, 1998. A validation study of the shallow slope stability model, SHALSTAB, in Forested Lands of Northern California. 1st Edn., Watershed and Riverine Sciences Stillwater Ecosystem, Berkeley.
- Felícísimo, Á.M., A. Cuartero and J. Remondo, 2013. Mapping landslide susceptibility with logistic regression, multiple adaptive regression Splines, classification and regression trees and maximum entropy methods: A comparative study. *Landslides*, 10: 175-189. DOI: 10.1007/s10346-012-0320-1
- Fernandes, N., R.F. Guimarães and R. Gomes *et al.*, 2001. Geomorphological controlling factors of landslides: theory, evidence from field experiments and application of a predictive model of susceptible areas. *Brazilian J. Geomorphology*, 2: 51-71.

- Guimarães, R.F., D.R. Montgomery and H.M. Greenberg, 2003. Parameterization of soil properties for a model of topographic controls on shallow landsliding: Application to Rio de Janeiro. *Eng. Geo.*, 69: 99-108.
- Guzzetti, F., A. Carrara and M. Cardinali, 1999. Landslide hazard evaluation: A review of current techniques and their application in a multi-scale study, Central Italy. *Geomorphology*, 31: 181-216.
- Guzzetti, F., P. Reichenbach and M. Cardinali, 2005. Probabilistic landslide hazard assessment at the basin scale. *Geomorphology*, 72: 272-299.
- Hosmer, D.W., S. Lemeshow and R.X. Sturdivant, 2013. *Applied Logistic Regression*. 3rd Edn., Wiley. New York, USA.
- Iverson, R.M., 2000. Landslide triggering by rain infiltration. *Water Resour. Res.*, 36: 1897-1910.
- Jaiswal, P., C.J. Van Westen and V. Jetten, 2010. Quantitative landslide hazard assessment along a transportation corridor in southern India. *Eng. Geol.*, 116: 236-250.
- Kleinbaum, D.G. and M. Klein, 2010. *Logistic Regression: A Self-Learning Text*. 3rd Edn., Springer, New York, USA.
- LAGEOP/UFRJ, 2007. Manual vista SAGA/UFRJ. <http://www.viconsaga.com.br/lageop/downloads.php>
- Mathew, J., V.K. Jha and G.S. Rawat, 2009. Landslide susceptibility mapping and its validation in part of Garhwal Lesser Himalaya, India, using binary logistic regression and receiver operating characteristic curve method. *Landslides*, 6: 17-26. DOI: 10.1007/s10346-008-0138-z
- Montgomery, D.R. and W.E. Dietrich, 1994. A physically based model for the topographic control on shallow landsliding. *Water Resour. Res.*, 30: 1153-1171. DOI: 10.1029/93WR02979
- Montgomery, D.R., K. Sullivan and H.M. Greenberg, 1998. Regional test of a model for shallow landsliding. *Hydrol. Process*, 12: 943-955.
- Pack, R.T., D.G. Tarbotan and C.N. Goodwin, 2005. SINMAP 2-A stability index approach to terrain stability hazard mapping. User's Manual. Terratech Consulting Ltd. (Salmon Arm, B.C., Canada).
- Pellicani, R., C.J. Van Westen and G. Spilotro, 2014. Assessing landslide exposure in areas with limited landslide information. *Landslides*, 11: 463-480. DOI: 10.1007/s10346-013-0386-4
- Pereira, S., J.L. Zêzere and C. Bateira, 2012. Technical note: assessing predictive capacity and conditional independence of landslide predisposing factors for shallow landslide susceptibility models. *Nat. Hazards Earth Syst. Sci.*, 12: 979-988. DOI: 10.5194/nhess-12-979-2012
- Pereira, S.S., 2009. *Landslide Hazard in Northern Portugal Region*. Ph.D. Dissertation, University of Porto, Porto, Portugal.
- Petrucci, O. and A.A. Pasqua, 2008. The study of past damaging hydrogeological events for damage susceptibility zonation. *Nat. Hazards Earth Syst. Sci.*, 8: 881-892.
- Petrucci, O. and A.A. Pasqua, 2009. A methodological approach to characterize Landslide Periods based on historical series of rainfall and landslide damage. *Nat. Hazards Earth Syst. Sci.*, 9: 1655-1670
- Petrucci, O. and A.A. Pasqua, 2012. Damaging events along roads during bad weather periods: a case study in Calabria (Italy). *Nat. Hazards Earth Syst. Sci.*, 12, 365-378. DOI: 10.5194/nhess-12-365-2012
- Ramos, V.M., R.F. Guimarães and A.L. Redivo, 2002. Application of the SHALSTAB model for mapping susceptible landslide areas in mine zone (Quadrilátero Ferrífero in Southeast Brazil). *Espaço e Geografia*, 5: 49-67.
- Rossi, M., F. Guzzetti and P. Reichenbach, 2010. Optimal landslide susceptibility zonation based on multiple forecasts. *Geomorphology*, 114: 129-142. DOI: 10.1016/j.geomorph.2009.06.020
- Salciarini, D., J.W. Godt and W.Z. Savage, 2006. Modeling regional initiation of rainfall-induced shallow landslides in the eastern Umbria Regional of Central Italy. *Landslides*, 3: 181-194. DOI: 10.1007/s10346-006-0037-0
- Santini, M., S. Grimaldi and F. Nardi, 2009. Pre-processing algorithms and landslide modeling on remotely sensed DEM's. *Geomorphology*, 113: 110-125.
- Savage, W.Z., J.W. Godt and R.L. Baum, 2004. Modeling Time-Dependent Areal Slope Stability. In: *Landslides: Evaluation and stabilization*. Lacerda, W., M. Ehrlich, S.A.B. Fontoura and A.S.F. Sayão (Eds.), Taylor and Francis Group, Rio de Janeiro, Brasil, pp: 23-36.
- Shaw, S.C. and D.H. Johnson, 1995. Slope morphology model derived from digital elevation data. *Proceedings of the Northwest ARC/INFO Users Conference, Coeur D'alene, (CCD' 95), ID*, pp: 16.
- Silva, E.L., R.A.T. Gomes, R.F. Guimarães and O.A.C. Júnior, 2013. Employment of shallow landslides model for disaster hazard management in the city of Vitória-ES. *Sociedade Natureza J.*, 25: 119-132.
- Silva, J.X., 1990. The New Version of the SAGA/UFRJ. In: *Brazilian Symposium on Remote Sensing*, 6. Manaus, Brazil.
- Soeters, R. and V. Westen, 1996. Slope instability recognition, analysis and zonation. *Landslides Investigat. Mitigat.*
- Süzen, M.L. and V. Doyuran, 2004. A comparison of GIS based landslide susceptibility assessment methods: Multivariate versus bivariate. *Environ. Geol.*, 45: 665-679. DOI: 10.1007/s00254-003-0917-8



- Teixeira, M., 2005. Shed Movements: Occurrence factors and inventory methodology. *Geonovas J.*, 19: 95-106.
- Vieira, B.C., N.F. Fernandes and O.A. Filho, 2010. Shallow landslide prediction in the Serra do Mar, São Paulo, Brazil. *Nat. Hazards Earth Syst. Sci.*, 10: 1829-1837. DOI: 10.5194/nhess-10-1829-2010.
- Vorpahl, P., H. Elsenbeer and M. Märker, 2012. How can statistical models help to determine driving factors of landslides? *Ecol. Model.*, 239: 27-39.
- World Bank, 2010. Natural hazards, unnatural disasters. The economics of effective prevention. World Bank, United Nations, Washington, USA.
- Wu, W. and R.C. Sidle, 1997. Application of a distributed Shallow Landslide Analysis Model (dSLAM) to managed forested catchments in Oregon, USA. *Human Impact Eros. Sedimentat.*, 245: 213-221.
- Yin, K. and T. Yan, 1988. Statistical prediction model for slope instability of metamorphosed rocks. *Landslides*, Lausanne.